

EST 1892

**LSBU**

**YOU SHOULD BE**

**WORTH**

**London South Bank University**



# WELCOME

to London South Bank  
University (LSBU)

# CONTENTS

- 5 reasons to study at LSBU
- Campus life in the heart of London
- Your life at London South Bank University
- This is London
- London's enterprising university
- Specialised facilities
- We are here to help you
- Getting involved - our students' union
- Study abroad
- Our courses
- Croydon
- Entry requirements
- Tuition fees
- How do I apply?
- Accommodation
- Living costs
- Visa information
- Contact us

# 5 REASONS

to study at LSBU



1.

## Our location

London South Bank University is based on campus in central London, just 10 minutes' walk from the city's business and cultural centres and from mainline rail stations at Waterloo and London Bridge.



2.

## Employability and enterprise

Our students regularly secure internships and graduate placements with market leaders such as PwC, Goldman Sachs, KPMG and Ogilvy.



3.

## Affordable accommodation

London South Bank University offers accommodation a short walk from its main campus in the Elephant and Castle area of London. Our rent prices are among the most affordable in the capital.



4.

## Award-winning student support

Our dedicated student support team offers first-class support, from health and wellbeing to technology, available from the moment you are offered a place through to graduation.



5.

## Scholarships and fee discounts

We have committed over £1m in financial support to help well-qualified students, including a wide range of scholarships and discounts for international students and alumni.

# CAMPUS LIFE

## in the heart of London

### London

Being a student in the world's most dynamic capital city is a special experience. That's why London has been named the best city for students for three years in a row by QS World University Rankings. It offers a thriving, multi-ethnic and multilingual environment—and we're located right at its heart.

London is the UK's hub for business, law, fashion, finance, the arts and technology, so whatever your interest, this is where you'll find the opportunities. From our campus you're only a minute's walk from the nearest Underground station and a short bus ride from some of the city's most famous locations, including Covent Garden, Tate Modern and the British Film Institute. We're a few minutes away from some of the city's most exciting cultural centres, like the South Bank, Borough Market and the iconic Shard.



### Elephant & Castle

London South Bank University's Southwark campus is in Elephant & Castle, an important junction since Roman times and the home of LSBU since 1892. Elephant & Castle is one of the most up-and-coming areas in London; there's so much to see and do within a short walk of the campus. Being here means you'll have sights, attractions and nightlife right on your doorstep.

The area is named after the Elephant & Castle pub, which has been around in one form or another since 1765. The pub offers a great selection of food and drink, and runs fun events on a Friday and Saturday night. Alternatively, Mercato Metropolitano is an outdoor covered food hall that has everything from an in-house cinema to craft beer, an urban farm

and cooking classes. Looking for something more upbeat? Ministry of Sound is one of our busiest neighbours, and the bars and clubs of Borough and London Bridge are just down the road. If history is more your scene, the Cinema Museum is a short walk away, as is the Imperial War Museum and its impressive grounds.

£3 billion has been invested into Elephant & Castle, including a £20 million new public leisure centre, 1,693 affordable homes and 10,000 jobs, plus training and apprenticeships.

**It's a unique place.  
Come and be part of it!**

# YOUR LIFE

## at LSBU

### Hands-on experience

Our academics maintain good connections with employers and our strong links with business mean our courses are always up to date with industry needs. Many courses feature work placements, giving you the opportunity to apply your knowledge away from the classroom. Most of our courses are accredited by professional bodies, giving you an advantage with future employers.

### Preparation for the world of work

At London South Bank University we want to set you up for a successful career. Our JobShop has an online board where you can see a wide range of part-time, full-time and voluntary placements. You can also drop in to see our JobShop advisers, who are always available to help you take the next step in your search; there's no need to book.

Or why not take advantage of the Careers Gym? We offer group workshops on CVs, interview techniques and finding work experience, as well as regular presentations from employers across a range of sectors.



Ranked in the

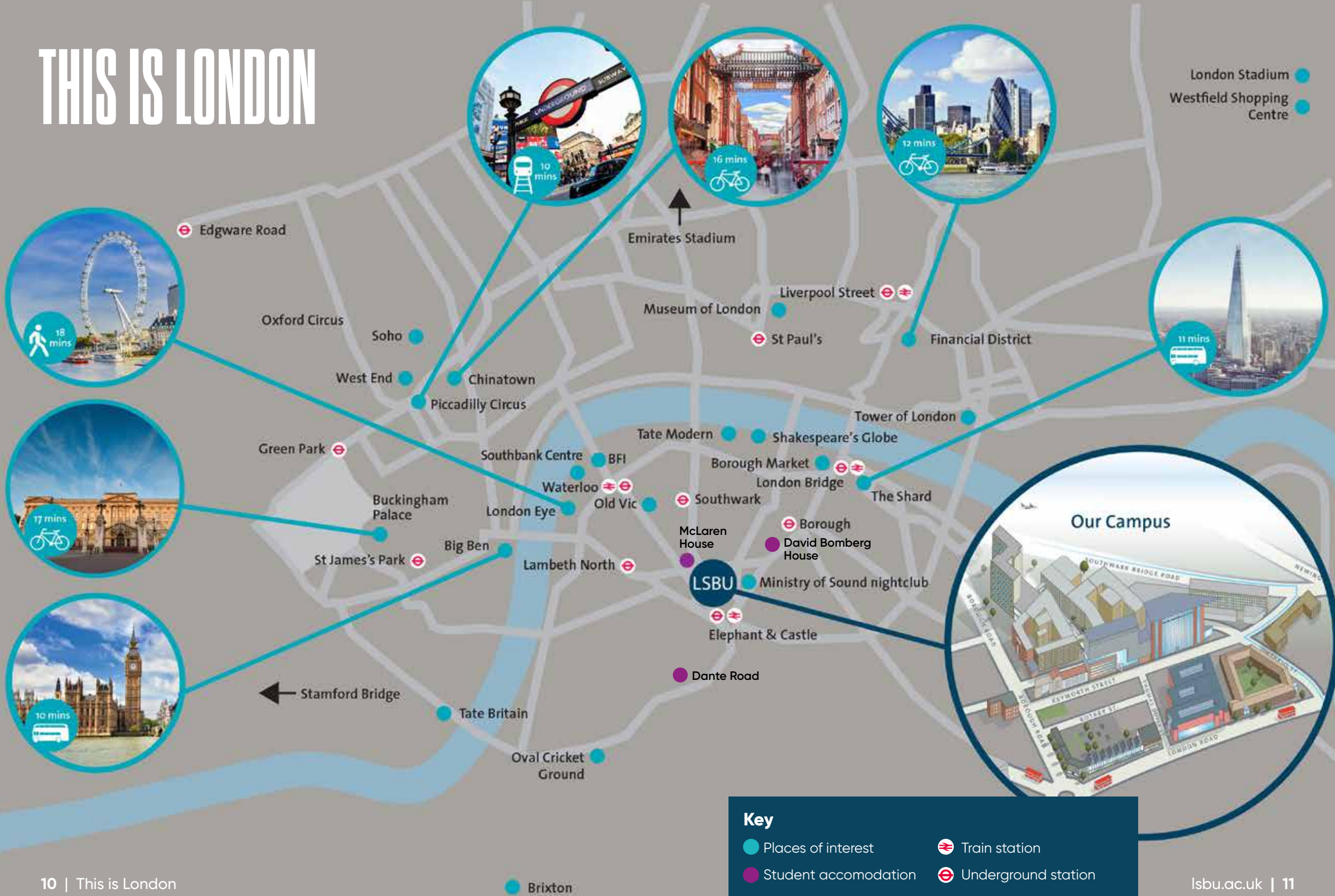
# TOP 200

universities globally  
for social impact for  
reducing inequalities

*Times Higher Education  
University Impact Rankings 2020*



# THIS IS LONDON



London Stadium ●  
Westfield Shopping Centre ●



Many people choose to study in their ideal location—lots of history, good sports facilities, great social life—before they move to the City for work. To which we say: if you can have it all right now, why wait? London South Bank University is rooted in the world's most exciting city, in a neighbourhood that's creative and dynamic. London offers clubbing ... culture ... shopping ... scenic views ... peace and quiet ... the ultimate riverside walks ... plus every business and networking opportunity on the planet.

**Make London your campus of choice with London South Bank University. Look what's on your doorstep!**



1.

### Mercato Metropolitano

3 min walk

London's first sustainable community food market, offering food from all over the world and even cooking classes (some in partnership with LSBU).



2.

### Ministry of Sound

2 min walk

One of our more famous neighbours, this world-renowned club was founded in 1991 in Elephant and Castle on the site of a disused bus garage.



3.

### Borough Market

10 min tube or bus

A foodie heaven and one of the most famous markets in London, if not the world. Many of London's freshest food trends start here and its stalls, bars and restaurants are the perfect place to hang out with friends.

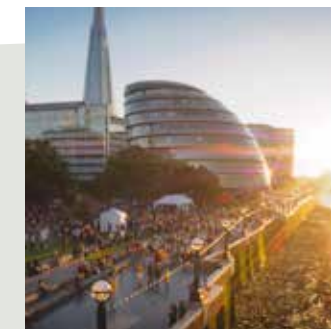


4.

### Burgess Park

19 min bus/30 min walk

London may be known for its famous streets, landmarks and megastars but it's also the city with the most park space in all of Europe. The nearest one is Burgess Park, where you'll find a BMX track, sports pitches, tennis courts, BBQ area, community art projects and two playgrounds.



5.

### The South Bank

13 min bus/19 min walk

The walk from Westminster Bridge to Tower Bridge takes in some of the most iconic sights of London including the Houses of Parliament, the South Bank Centre/Festival Hall and food area, many pubs and restaurants, Shakespeare's Globe Theatre, the Tate Modern, and the London skyline.

# London's ENTERPRISING university

Enterprise is more than just a way of thinking, it's a way of being and a way of doing. It's about developing transferable skills and seizing opportunities that are valuable to any career.

We empower you to develop your entrepreneurial skills and mindset. You'll enhance your employability prospects and take on real-world learning opportunities, whether you start a business, work freelance or find employment.

We provide invaluable advice and mentorship during and beyond your studies and ensure that you learn in a skills-based environment with links to our industry partners. Enterprise is a part of the curriculum at London South Bank University.

We are also a university partner of IPSE (the Association of Independent Professionals and the Self-Employed), providing exciting opportunities for students who wish to further develop their career as a freelancer or independent consultant.

## The Clarence Centre for Enterprise and Innovation

The award-winning Clarence Centre for Enterprise and Innovation is LSBU's hub for entrepreneurial activity and home to a variety of start-ups and local businesses.

With 72 small businesses onsite, the Clarence Centre works to provide local support to start-ups in the community. It is the base for LSBU's award-winning Student Enterprise team, where successful entrepreneurs share their experiences to inspire our students, develop their mindset and refine their enterprising ideas.



Everything in my degree was so relevant to starting a business. Most of my modules involved start-ups and I used my own business ideas for assignments. I applied all the techniques I learnt to my business, whether market analysis, finance or accounting.

**Rotsen Ibarra**  
Venezuela

## A COMMUNITY OF ENTREPRENEURS

Together, we are building a culture of enterprise at LSBU. Activities are delivered and supported by a vibrant on-campus entrepreneurial community that includes university staff, students, alumni and businesses, all with a variety of experiences to share.

Our community:



created over  
400 jobs



helped 1,450  
start-ups  
and 27  
student  
start-ups



generated  
£317m  
combined  
income



raised £13.5m  
in finance



assisted 3.2m  
beneficiaries  
through  
charitable  
activities



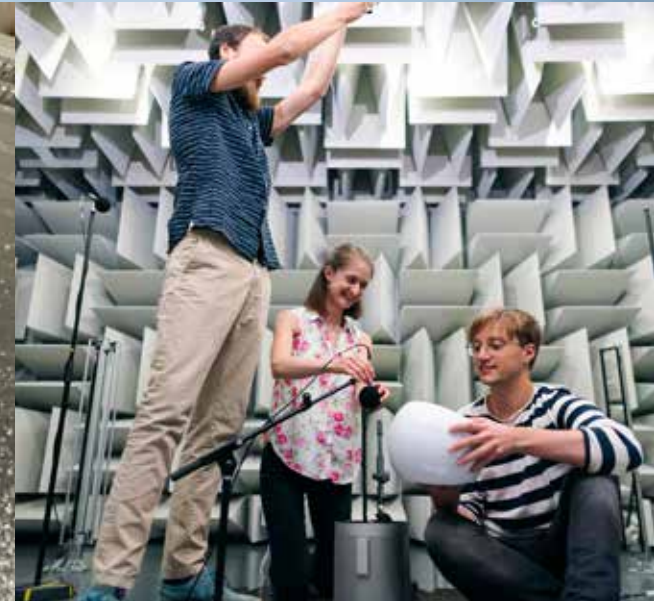
# SPECIALISED FACILITIES

Your environment has a huge impact on your learning. Each of our Schools offers unique and exciting facilities, designed to improve your learning experience and make you industry-ready.

Our teaching provides you with real-world, cutting-edge facilities and equipment.

Facilities include:

- anechoic chamber
- architecture studios
- crime scene flat
- Building Information Modelling centre
- Digital Architecture Robotics lab
- human performance area
- learning resources centre
- library
- media centre and theatre
- psychology facilities
- simulated health wards.



# We're here to **HELP YOU**

**At London South Bank University you'll find support through your entire academic journey.**

Whether you study at undergraduate or postgraduate level, you'll soon realise that you're not far away from our student support team, who will help you navigate your own personal student journey.

## **Student advice**

Advice and guidance on financial issues such as:

- budgeting, money management and maximising your income
- student finance
- debt, including referrals to other services
- emergency support
- migration advice
- legal advice services.

## **Fees and bursaries**

Assistance with matters such as:

- tuition fees
- student finance
- bursaries and scholarships
- refunds.



## **Withdrawals and interruptions**

Advice on withdrawing or interrupting your studies, including:

- how to withdraw or interrupt
- implications for fees and funding
- returning from an interruption.



## **Employability advice and workshops**

Our Employability and Placements Service (LSBU Careers Hub and LSBU Employment) offers workshops, one-on-one appointments, events such as careers fairs, and a managed temporary vacancy service. Through this service you can:

- get advice and guidance on future careers
- book one-on-one appointments
- search for jobs and placements
- register for workshops and events, like our careers fairs
- access career resources such as CV360 and Career Planner.



# Careers Hub

## TOP 5

**We're in the top 5  
in the UK for Graduate  
Prospects**

*Complete University Guide 2021*

Employability is built into every single course we teach at London South Bank University, and our fantastically active employability service—LSBU's Employment and Placements Service—will support you from the moment you arrive and for as long as you need after you graduate.

Drop into our Careers Hub, access our online jobs board, take a workshop to make your CV stand out from the crowd, or visit our recruitment agency, LSBU Employment, which pitches part-time jobs on campus throughout the university.

Get a headstart on your career before you even graduate. Our employability and enterprise services help you take control of your career. You can access support to turn your ideas into businesses, find part-time work to support your studies, build your skills through placements, work experience, and voluntary roles, and grow the experience you need to stand out from the crowd.



The Careers Hub is available to all LSBU students and alumni indefinitely. Finding our students a job is the ultimate goal, but the journey begins from the moment they join LSBU. We help students nurture and hone the abilities that make them more employable.

We offer workshops and one-to-one sessions on preparing a CV, writing a cover letter, interview skills, securing placements, part-time and full-time jobs and internships—and finally applying for graduate jobs.

Our advice is tailored to each student's particular degree and personal requirements—we're here for you.

Daneyal Mirza (Danny)  
Employability Consultant

# GETTING INVOLVED

## Our students' union

London South Bank Students' Union (LSBSU) is a charity, independent from the university, run by students, for students. You'll become a member for free when you enrol at LSBU.

### Make change

The Students' Union is here to represent LSBU students. We have over 700 part-time elected representatives, who are the driving force for change at LSBU, empowering students and ensuring their voices are heard. In the past, they have campaigned on issues such as the renovation of the Grads Café, keeping down the cost of food on campus and the reopening of the student bar.

### Have fun

While studying is a key part of student life, so is having fun! The Students' Union puts on weekly and one-off events throughout the year, for students to relax and socialise. From a weekly pub quiz to special club nights, film screenings to mature students' mixers, there's something for everyone.



The Students' Union hosts great events where you meet other students from all over the world. There are opportunities to work part time and get involved, from societies to sports to officer positions. I've been elected as a part-time student officer, to help make sure everyone has a good university experience.

**Orsolya Itoya**  
LSBU international undergraduate, Law with Criminology

### Great advice

The advice service gives free, independent advice about a range of issues that affect students and if specialist help is needed, we can signpost you to the most appropriate service. Find out more at [www.lsbsu.org/advice](http://www.lsbsu.org/advice).

### Get involved

We have lots of activities for you to get involved with, including over 40 societies geared towards students with common interests to meet up and do what they love. These range from academic pursuits to politics and faith groups. Find out more at [www.lsbsu.org/societies](http://www.lsbsu.org/societies).

### Into sports?

LSBSU runs over 20 different sports clubs, competing nationally in British Universities & Colleges Sport (BUCS) leagues and Varsity, a one-day competition with other London universities. Visit [www.lsbsu.org/sports](http://www.lsbsu.org/sports) to find out more.

If you can't find something you're interested in, you can start a sports club or society. Get thinking about what you want to get involved in!



# STUDY ABROAD

## Double your international experience

Our Study Abroad programme is about adding value to your time as a student, and enjoying a truly dynamic, life-altering experience. You'll live in another country, interact with people from different backgrounds and experience a different way of life. You'll gain greater confidence in your decision-making processes and immerse yourself in a new culture, all while enhancing your future career prospects.

### Inbound programmes

If you are currently studying at university, or want to experience university education in London for a semester or a year, then our Study Abroad programme is for you.

At London South Bank University we offer subject pathways that build on and enhance your studies. You'll study alongside our current students to ensure you get the most from this cultural, social and higher-education experience. We have a broad selection of modules that will fit with the course or programme at your home university.



### What's on offer?

With decades of experience in teaching, our academic Schools make sure that the modules we offer are engaging and relevant to your needs. Currently we offer a choice of 140 modules across seven Schools, giving you the opportunity to pick exactly what you need to enhance your studies.



I went for one semester to sunny south Florida at FAU for my study abroad experience and it was the best decision I have ever made!

I developed new skills both personally and in my degree. I gained independence, tried new foods and hobbies and made friends from different countries and culture! The university experience taught me aspects of marketing and advertising from a different perspective than UK.

The best thing about the exchange was feeling completely free. Also, the weather was also great that at times I felt like I was on holiday. Likewise, the people were friendly and really enjoyed the British accent.

The challenges were going somewhere where you do not know anyone but I felt so supported by locals and class mates. Overall, I would encourage every student to experience studying abroad as you can learn a lot and really open up your mind and world.

### Ellis North

BA (Hons) Marketing with Advertising & Digital Communications

# OUR COURSES



# YOUR FUTURE

starts here!

We have eight academic Schools offering more than 50 undergraduate qualifications across a wide range of subjects. Find your passion!

When you've selected your areas of interest, take a look at each course in more detail.

## Institute of Health and Social Care

- Chiropractic
- Physiotherapy
- Social Work



## LSBU Business School

- Accounting and Finance
- Business Management
- Economics
- Hospitality, Events and Tourism
- Human Resources Management
- Marketing
- Project Management



## School of Arts and Creative Industries

- Acting and Performance
- Fashion Communication
- Film and TV Practice
- Games Design and Development
- Media Production
- Music and Sound Design
- Photography and Imaging



## School of Applied Science

- Baking Science and Technology
- Biomedical Sciences
- Forensic Science
- Sport and Exercise Science
- Psychology



## School of Engineering

- Advanced Vehicle Engineering
- Chemical and Energy Engineering
- Computer Science
- Electrical and Electronic Engineering
- Mechanical Engineering
- Information Technology
- Product Design



## School of Law and Social Sciences

- Criminology
- Education
- Law
- Politics and International Relations
- Sociology
- Urban and Environmental Planning



## School of The Built Environment and Architecture

- Architectural Technology
- Architecture
- Building Services Engineering
- Building Surveying
- Civil Engineering
- Construction Management
- Quantity Surveying



# A new suite of COURSES

Nothing is so certain—or invigorating—as change! At LSBU we’re constantly adapting to make sure our courses are relevant and you’re equipped for the workplace not just today, but tomorrow and all the days to come.

## Learning in context

Many of our courses now include the option to explore course content within a particular social, political, technological or environmental context. For example, you could tailor your Criminology, Politics or Sociology course with an optional pathway in black studies, social policy or sustainability.

Other options include social mobility, inclusion and de-colonising (i.e. removing the colonial perspective).

Our steady commitment to delivering relevant courses that align to business needs and are informed by industry and the changing world makes sure you hit the ground running once you graduate.

Many of the undergraduate courses in each academic School share a common first year. This gives you the chance to more fully explore your subject in Year 1, along with the option to then choose a pathway to specialise in.



A new module in the third year of undergraduate courses helps you demonstrate your ability to apply your skills in a real-world, real-time project of your design, closely aligned with employer expectations.

## Making our courses more relevant than ever:

- Many of our courses include optional pathways that give you the flexibility to choose the area you want to specialise in, after you start.
- Our courses include relevant professional and technical skills for the workplace.
- We’ve embedded entrepreneurship and sustainability training into our courses so you can start your own business with an understanding of responsibility.
- In some subjects, a Year 3 module enables you to demonstrate your learning within a project of your choice.
- A new course-implementation plan with networked support helps you track and tailor your development across skills, knowledge and abilities.

## Accelerated degrees

We are proud to offer a new two-year accelerated degree at our Croydon campus, which benefits from academic support, brand new facilities and student experience all year round.

This bachelor-level degree course condenses the traditional three-year undergraduate course into two. Allowing you to start your career earlier, it’s perfect for those eager to get into the workplace.

Accelerated degrees are available in:

- Accounting and Finance
- Business Management.



# CROYDON

## Living in Croydon

You're going to love our newest campus in Croydon, a state-of-the-art teaching space fit for the future of learning. It opened for business in 2021 and, like the rest of LSBU, it offers cutting-edge and highly specialist facilities, practical support and career-focused courses.

In short, LSBU Croydon is what happens when passion meets opportunity.

A new two-year accelerated degree at the Croydon campus offers the option to follow an intensive course of study that gets you into the workplace more quickly.

## Travel

At our Croydon campus you're a short walk from both East Croydon and West Croydon railway stations, with regular trains to central London and the south of England. The campus is served by a good bus and tram network.

## Accommodation

Rent privately: There is ample private accommodation available to rent in Croydon, and we're on hand to offer guidance and advice.

Email: [accommodation@lsbu.ac.uk](mailto:accommodation@lsbu.ac.uk)



## Croydon—right place, right time

If you're looking to turn your passion into your own business or to work with some of the biggest brands in the world, then you're in the right place at the right time.

LSBU Croydon is our newest and our second-largest campus—and we didn't choose this location by accident. From household names and big brands to ambitious start-ups, Croydon is home to some of London's most exciting businesses.

At LSBU Croydon we provide ambitious, business-minded Londoners with a new business hub, full to the brim with entrepreneurial spirit, where people gather to share knowledge and ideas. As a student here, you'll be exposed to networking opportunities most establishments can only dream of.

# ENTRY REQUIREMENTS



you want to be.

# ENTRY QUALIFICATIONS

## for international students

We accept a wide range of international qualifications. For guidance on whether your qualification will be acceptable, please contact our International Office, check the country-specific pages of the LSBU website at [www.lsbu.ac.uk/international](http://www.lsbu.ac.uk/international), or visit the UK national agency for international qualifications and skills (ENIC-NARIC): see [www.enic.org.uk](http://www.enic.org.uk)/[www.naric.org.uk](http://www.naric.org.uk).

If you need a student visa to study in the UK, we advise you to check the Home Office immigration English language requirements. You may need to take a Secure English Language Test (SELT), as specified by the Home Office, and meet the minimum component scores.

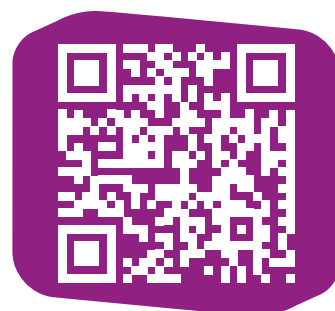
See [www.lsbu.ac.uk/international](http://www.lsbu.ac.uk/international)

### International Baccalaureate (IB) Diploma UCAS points

Higher Level	Standard Level	Extended Essay	Theory of Knowledge
H7	56 S7	28 A 12	12
H6	48 S6	24 B 10	10
H5	32 S5	16 C 8	8
H4	24 S4	12 D 6	6
H3	12 S3	6 E 4	4

International qualifications are also welcomed.

Check qualifications by country at:



### Working in the UK

As an international student on a student visa, you will be allowed to work up to 20 hours a week during term time and full-time during holidays. Our Careers and Employability Service can help you find a job and support you with your long-term career plans.



LSBU has a huge international body of students and we provide a range of services to help them find part-time and graduate jobs in the UK. We help them tailor their CV to UK standards and hone their interview skills for British employers. We also point them towards the advice they might need to work in the UK, such as LSBU's visa department, Student Enterprise, or LSBU Employment.

**Daneyal Mirza (Danny)**  
LSBU Employability Consultant

### English language requirements

To study at London South Bank University you must be able to demonstrate proficiency in the English language.

If you require a student visa, you will be required to take a Secure English Language Test (SELT) in order to study an undergraduate (bachelor's) or postgraduate degree with us.

These requirements apply to all applicants that are not of majority-English-speaking nationality as defined by the UK Home Office, or those who do not possess a degree awarded, studied and conferred in a majority-English-speaking country.

The list of English language qualifications recognised by London South Bank University is below. Please be aware these are for guidance only and subject to change. Some courses may have English requirements higher than those listed below. If you have any further questions about what English level you will be required to demonstrate or whether your qualification will be accepted by LSBU as proof of English, please email [global@lsbu.ac.uk](mailto:global@lsbu.ac.uk).

## International English Language Qualifications accepted by LSBU

Validity: For admissions and CAS purposes, period of validity for all English language certificates is two years. For English qualifications taken as part of high school curriculum (such as GCSE, A-levels, IB, etc, or other English-language waivers listed below), period of validity is five years.

Qualification	Undergraduate degree English language requirements	Postgraduate degree English language requirements (for 'MSc with Internship' requirements, please see below)
IELTS Academic	Overall score: 6.0 (with no component below 5.5)	Overall score: 6.5 (with no component below 5.5)
TOEFL IBT (Internet Based Test)	Overall score: 80 Minimum scores required in each skill area are: Reading: 18 Listening: 17 Writing: 17 Speaking: 20	Overall score: 90 Minimum scores required in each skill area are: Reading: 18 Listening: 17 Writing: 17 Speaking: 20
Pearson Test of English Academic (PTE Academic)	Overall score: 52 Minimum score required in each skill area is 51	Overall score: 60 Minimum score required in each skill area is 51
LanguageCert SELT or International ESOL (IESOL) Exam • B2 Communicator • C1 Expert • C2 Mastery	High Pass For Student Visa the minimum score required in each skill area is 33* (*For C2 Mastery, min score for Listening is 25)	High Pass For Student Visa the minimum score required in each skill area is 33* (*For C2 Mastery, min score for Listening is 25)
University of Cambridge ESOL Examinations: • First Certificate in English (FCE) • Cambridge Advanced (CAE) • Cambridge Proficiency (CPE)	Overall score: 169 with no score below 162	Pass ISE III with 'Pass' in all four components
Trinity ISE	Pass ISE II with 'Distinction' in all four components	Pass ISE III with 'Pass' in all four components
A-Level/ AS-Level English Language	Grade C or above	Grade C or above
GCSE / O-Level English Language (Edexcel/ Cambridge Overseas exam boards)	Grade C or above Grade 4 or above	Grade C or above Grade 4 or above
IGCSE English as a Second Language/First Language English (Cambridge Assessment)	Grade C or above	Grade C or above
Cambridge Overseas School Certificate (COSC)	Grade C or above	Grade C or above
Scottish Advanced Higher/Higher/ National 5 English	Grade C or above	Grade C or above
International Baccalaureate Diploma English A	HL 4/SL 5	HL 4/SL 5
International Baccalaureate Diploma English B	SL 5	SL 5

## English Language Qualifications accepted by LSBU Business School for 'MSc with Internship' courses

Tests accepted for MSc+ internship courses:	Accepted English tests for 'MSc with Internship' courses	The following tests are not accepted for 'MSc with Internship'
Academic IELTS (including IELTS Indicator)	Overall score: 6.5 with minimum 6.0 in Speaking and Writing and 5.5 in Reading and Listening	<ul style="list-style-type: none"> <li>• Duolingo</li> <li>• Password</li> <li>• National Qualifications (such as A-levels, GCSE, IB, WAEC, Standard 12, etc)</li> </ul>
TOEFL (including 'TOEFL at home')	TOEFL IBT - Overall score: 90 Reading: 18 Listening: 17 Writing: 21 Speaking: 20	
PTE Academic	Overall score: 60 Minimum score required in each skill area is 51	
LanguageCert SELT or International ESOL (Online version also accepted) <ul style="list-style-type: none"> <li>• B2 Communicator</li> <li>• C1 Expert</li> <li>• C2 Mastery</li> </ul>	'High Pass' Overall Minimum score required in each skill area is 33* (*For C2 Mastery, min score for Listening is 25)	



# TUITION FEES

## A qualification from LSBU is an investment in your future.

An undergraduate, postgraduate or professional qualification from LSBU will give you an internationally recognised qualification that will open doors to excellent employment opportunities.

When you are budgeting to study abroad you need to consider tuition fees, living expenses and how long you are going to be studying abroad. At LSBU we offer two and three-year bachelor's and one-year master's degrees. With this in mind, LSBU is a great alternative to Australian, USA and Canadian universities, where undergraduate courses last between four to five years and master's degrees two years.

### Tuition fees

Tuition fees cover the cost of your learning experience at LSBU. Tuition fees per year for undergraduate and postgraduate can be found at:

#### Tuition fee deposit

If you need to apply for a student visa you will also require an electronic Confirmation of Acceptance for Studies (CAS) number issued by the university to support your student visa application.

Before a CAS number can be issued, you are required to hold a firmly accepted, unconditional offer of a place at LSBU and to have paid a tuition fee deposit. Full information about the deposit payment process and terms and conditions of the scheme is detailed at:



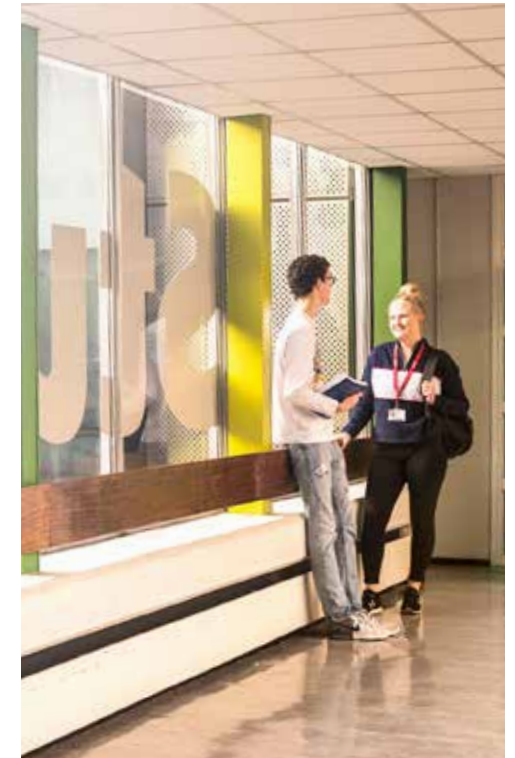
## Scholarships and discounts

We have committed over £1 million to our international scholarship scheme.

London South Bank University welcomes and encourages students from all over the world to study with us. That is why we offer a range of scholarships. To be eligible for a scholarship, you must hold a valid offer of a place at LSBU for a full-time degree programme.

\*Please see website for the most up-to-date information as fees, scholarships and discounts options are subject to change:  
[www.lsbu.ac.uk/international/fees-and-funding](http://www.lsbu.ac.uk/international/fees-and-funding)

Scan the QR code to find out what scholarships we offer.





### 3. Federal aid for US students

LSBU participates in the William D. Ford Federal Direct Loan Program (Direct Loans). This is the main US Federal funding available to US students in the UK.

To begin the loan process, complete your Free Application for Federal Student Aid (FAFSA) and select London South Bank University as one of your school options. LSBU's Direct Loan federal code is G33523 (or 03352300).

External scholarships for US students include:

- Benjamin A. Gilman International Scholarship
- BUTEX International Scholarship
- Chevening Scholarships
- Foundation for Global Scholars
- Fund for Education Abroad
- Go Overseas
- Tortuga Backpacks
- University Language.

### 4. Payment plan

You can spread the cost of your tuition fees by paying in three instalments. Pay the initial down payment of one half (50%) of the fee before the start of your studies. The remaining two instalments, amounting to a quarter (25%) of the fee each, are due on the dates given below. You can pay online using our Online Payment Portal.



#### Paying in instalments (September intake only)

Deposit payment (pre-arrival)	50% of total fee
1 December	25% of total fee
Beginning of Semester 2	25% of total fee



# HOW DO I APPLY?

Applying to a UK university can be confusing, but at LSBU we offer options to make it easier.

## 1. Use an LSBU-approved representative

LSBU works with several professional educational agencies around the world that can help you choose the best course for you. They will manage the application process on your behalf. Contact us for a list of representatives in your region: [global@lsbu.ac.uk](mailto:global@lsbu.ac.uk).

## 2. LSBU Online Application Form

If you are an overseas student or an EU national that does not have settled status, you can apply directly to us by completing our Online Application Form. It is very important to upload all the necessary supporting documents as they are required to process your application. You will be able to make one application and choose up to two courses to apply to.

## 3. Alternative application systems

If your course is not listed in our LSBU Online Application System and you want to take an undergraduate course (full-time or part-time), you can apply via UCAS.

UCAS, the University and Colleges Admissions Service, allows students to apply for undergraduate (bachelor) degrees in the UK. See [www.ucas.com](http://www.ucas.com).

If you are unsure about how to apply to LSBU, please contact us, and one of our advisors will be able to help you: [global@lsbu.ac.uk](mailto:global@lsbu.ac.uk).

## 4. What happens next?

Once you have submitted your online application you will receive an email confirming that it has been successfully received and that your application is being checked by our International Admissions Team.

When your application has been reviewed by an International Admissions Officer, you will receive an email stating your ID number, which you must use whenever you contact us about the status of your application.





# ACCOMMODATION



## A home away from home

Living away from home for the first time can be a big deal. Our Accommodation Service is here to help make it comfortable, welcoming and hassle-free.

We offer:

- options to suit all budgets
- accommodation a short walk from our Southwark campus
- all-inclusive rent.

You can rent from LSBU and you'll deal directly with the university, not third-party providers. That means we can guarantee you options to suit all budgets, with clear tenancy agreements and all-inclusive rents that include insurance for your personal belonging.



LSBU has over 1,000 single bedrooms to rent, distributed across three halls of residence, all in the heart of central London. Each single occupancy, self-catered room features:

- a choice of en-suite or shared bathroom facilities
- wi-fi internet and access to the university network
- on-site laundry facilities
- on-site management teams and on-call staff for emergencies.

All rooms are non-smoking and have access to a kitchen so you can cook what you want, when you want. Flats accommodate between two and nine residents, depending on the building.

Or, if you'd rather rent privately, we can give you a list of landlords – just ask our Accommodation Service.

If you have any disability or medical condition that affects the kind of accommodation you need, our Disability and Dyslexia Support team is here to help.



# LIVING COSTS

## as an international student

The table below offers a general guide to what you can expect to pay when you study and live in London. Of course, each student's expenses will be different—for example, if you plan to do a lot of your research at home, your utility and broadband bills might be higher; travel costs will vary according to your lecture timetable; personal costs will vary according to your interests and pursuits while in London. You will need to tailor your budget accordingly.

Many of our international students choose to take part-time jobs to help cover their expenses; our dedicated employment hub can help you with this.

Expenses	University Accommodation (Weekly)	Private Accommodation (Weekly)
Accommodation	£152-£255	£150-£300
Groceries/household supplies	£40-£70	£40-£70
Utility bills	£0	£40-£80
Local travel	£10	£15-£30
Study materials	£5-£10	£5-£10
Other expenses	£10-£30	£10-£30

*\*Estimated living costs as of 2022.  
Please note this is subject to change.*

If you're thinking of commuting, you'll qualify for a student travel card which can save you up to 30% on public transport across the city. You'll also find that National Rail offers a 16-25 and 26-30 railcard, which will save you up to one third on off-peak travel.



# VISA INFORMATION

## Do you need a visa to study in the UK?

You may need to apply for a visa from your country of residence as part of your international student journey to LSBU.

- For courses lasting more than six months, you will need a student visa.
- For courses lasting less than six months, you can obtain a visitor visa, which will allow study for up to six months. Take into account that you cannot do paid or unpaid work with a visitor visa but you can volunteer for up to 30 days with a registered charity.



## Student visa

To apply for a student visa you will need a Confirmation of Acceptance for Studies (CAS) from LSBU.

The CAS is a virtual document that contains information about you and your course of study and is a very important requirement to obtain your student visa.



# CONTACT US



[www.lsbu.ac.uk](http://www.lsbu.ac.uk)



[global@lsbu.ac.uk](mailto:global@lsbu.ac.uk)



+44 (0) 207 815 6189



London South Bank University  
103 Borough Road  
London  
SE1 0AA  
United Kingdom



/london-south-bank-university



/londonsouthbankuni



/lsbu



/Londonsouthbankuni



/londonsouthbankuni

## Useful websites

- UK Council for International Student Affairs  
[www.ukcisa.org.uk](http://www.ukcisa.org.uk)
- The British Council  
[www.britishcouncil.org](http://www.britishcouncil.org)
- The UK National Agency for international qualifications and skills  
[www.enic.org.uk](http://www.enic.org.uk)
- UK Visas and Immigration  
[www.gov.uk/ukvi](http://www.gov.uk/ukvi)
- UCAS (for undergraduate applications)  
[www.ucas.ac.uk](http://www.ucas.ac.uk)



# NOTES

---

---

---

---

---

---

---

---

---

---

---

---

---

---

---

---

---

---

---

---

---

---

---

---

---

---

All information is considered to be true and correct at the time of printing, August 2023. Changes after the publication may impact on its accuracy.

Need advice? Give us a shout!

[www.lsbu.ac.uk](http://www.lsbu.ac.uk)

[global@lsbu.ac.uk](mailto:global@lsbu.ac.uk)

+44 (0) 207 815 6189



EST 1892 **LSBU**